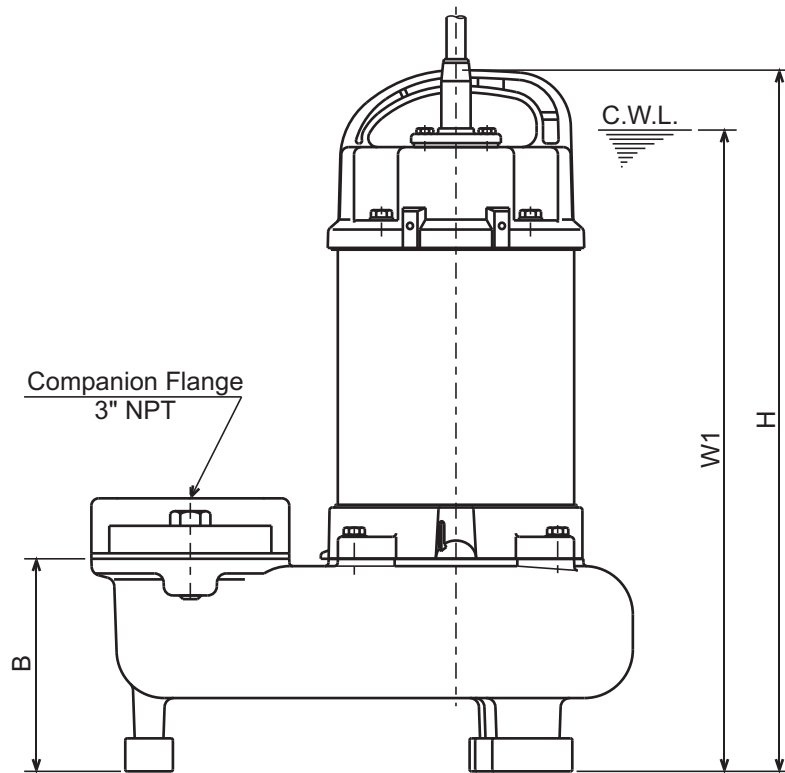
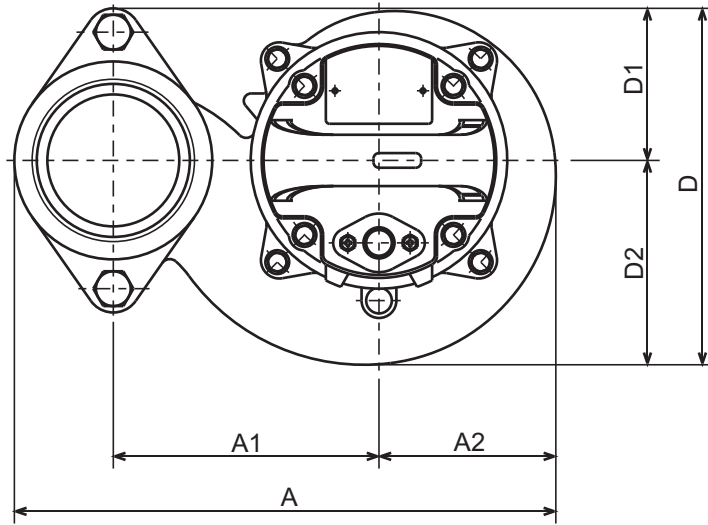




12-PN
HIGH VOLUME POND PUMP

DIMENSIONS

12-PN



C.W.L. :Continuous running Water Level

DIMENSIONS:USCS (Inch)

Model	HP	NOM. SIZE	Pump & Motor								C.W.L.	Wt. (lbs.)
			A	A1	A2	B	D	D1	D2	H	W1	
12-PN	1	3"	11 5/8	5 11/16	3 13/16	4 9/16	7 11/16	3 1/4	4 3/8	15 1/16	13 3/4	31.9

DIMENSIONS:METRIC (mm)

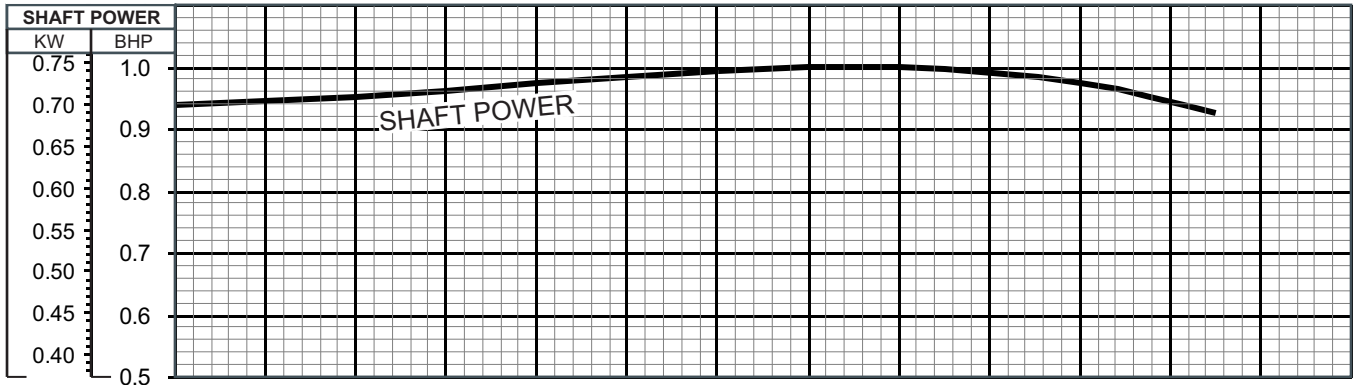
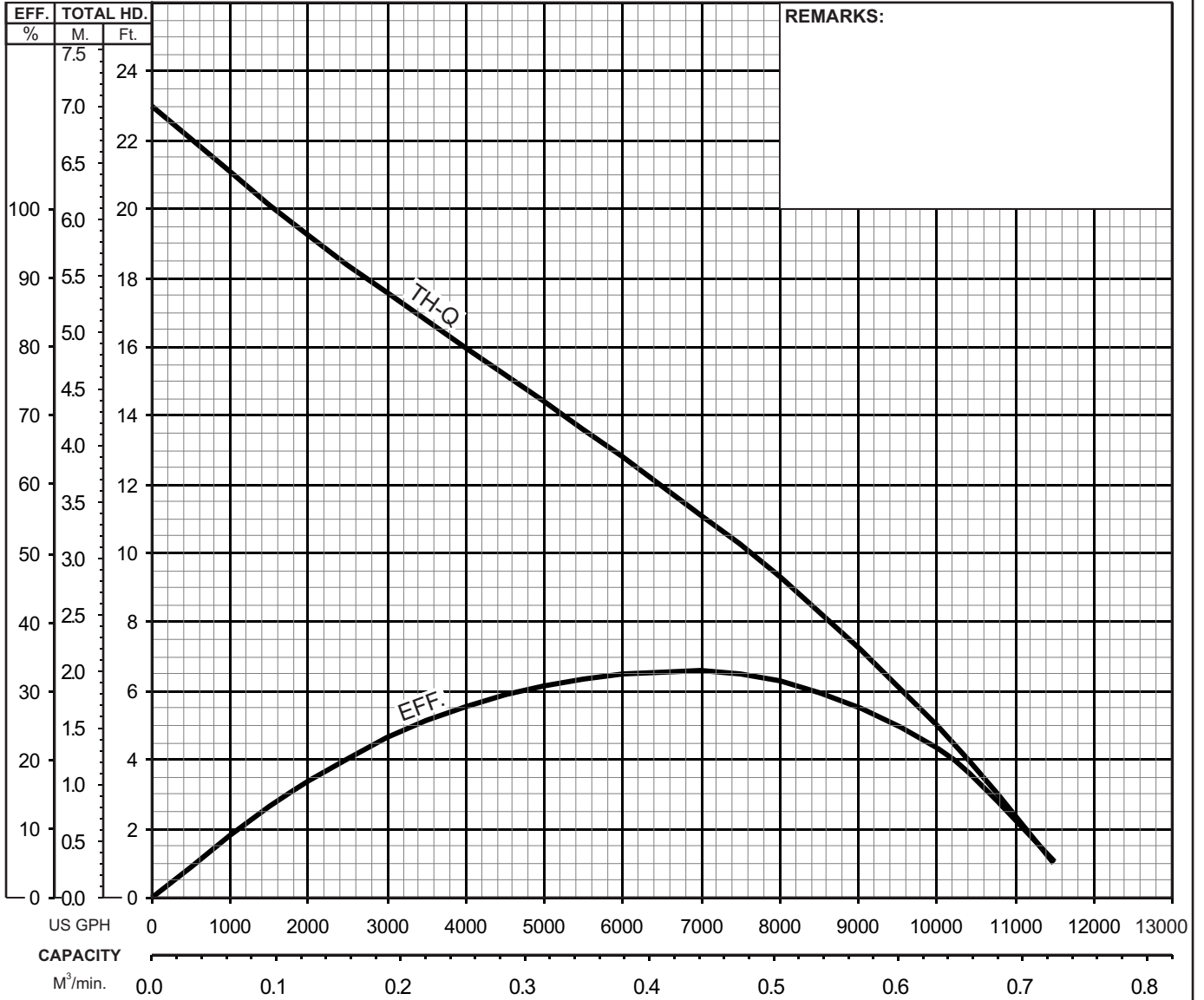
Model	kW	NOM. SIZE	Pump & Motor								C.W.L.	Wt. (kg)
			A	A1	A2	B	D	D1	D2	H	W1	
12-PN	0.75	80	296	145	97	116	195	83	112	383	350	14.5

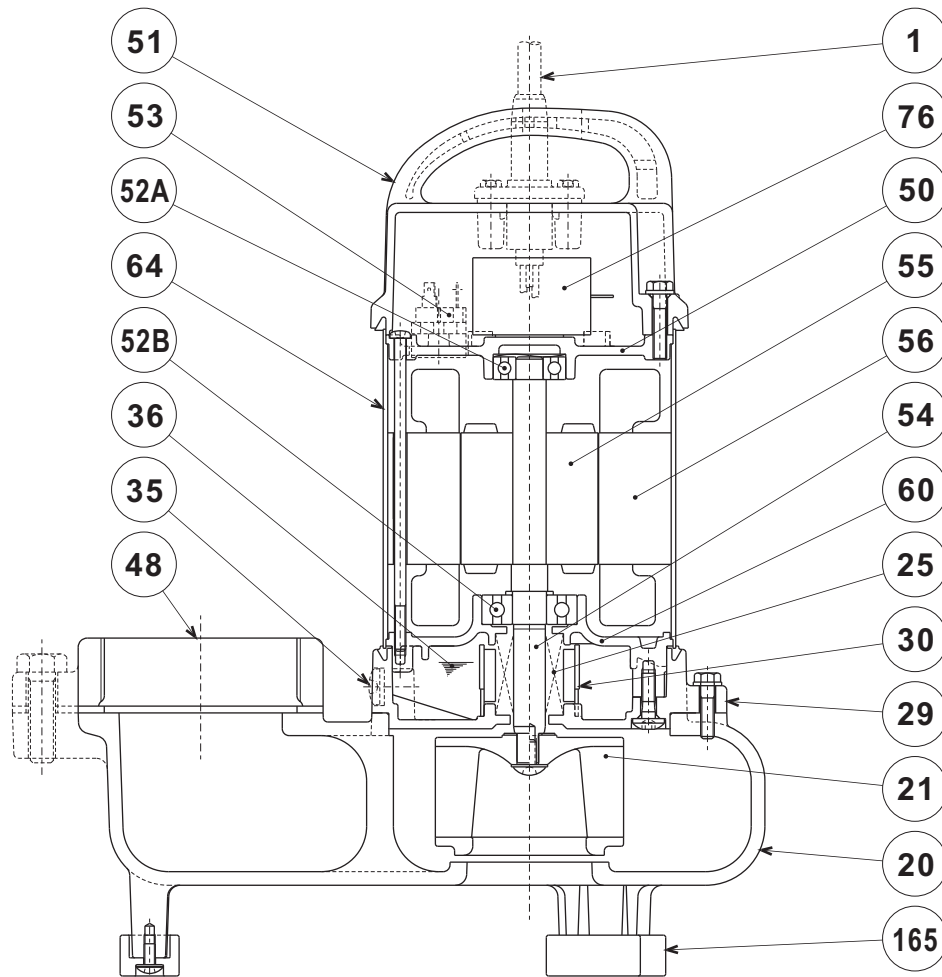


12-PN HIGH VOLUME POND PUMP

PERFORMANCE CURVE

MODEL	BORE	HP	KW	RPM	SOLIDS DIA	LIQUID	SG.	VISCOSITY	TEMP.
12-PN	3" / 80mm	1	0.75	3374	1.38" / 35mm	Water	1.0	1.123 cSt	60°F
PUMP TYPE	PHASE	VOLTAGE	AMPERAGE	HZ	STARTING METHOD	INS. CLASS			
High Volume Pond Pump	Single	110 / 115 / 120	9.0 / 8.7 / 8.6	60	Capacitor-Start	E			
CURVE No.	DATE	PHASE	VOLTAGE	AMPERAGE	HZ	STARTING METHOD	INS. CLASS		
-	-	-	-	-	-	-	-		



12-PN


PART#	DESCRIPTION	MAIN MATERIAL / NOTE	RELATED ASTM, AISI CODE	RELATED EN CODE	QTY
1	Power Cable	PVC Sheath AWG16/3-20ft			1
20	Pump Casing	Cast Iron	A48M Class30B	EN 1561 GJL-200	1
21	Impeller	PPO Plastic w/GF20			1
25	Mechanical Seal	Silicon Carbide / W-14HL			1
29	Oil Casing	PPS Plastic w/GF40			1
30	Oil Lifter	PBT Plastic			1
35	Oil Plug	Stainless Steel	S 30400	1.4301	1
36	Lubricant	White Mineral Oil ISO VG32			
48	Companion Flange	Cast Iron / NPT 3"	A48M Class30B	EN 1561 GJL-200	1
50	Motor Bracket	Aluminum Alloy Die Casting	B85 383.0	EN 1706 AC-46100	1
51	Motor Head Cover	PPS Plastic w/GF40			1
52A	Upper Bearing	#6201ZZC3			1
52B	Lower Bearing	#6302ZZC3			1
53	Motor Protector				1
54	Shaft	Stainless Steel	S 30400	1.4301	1
55	Rotor				1
56	Stator				1
60	Bearing Housing	Aluminum Alloy Die Casting	B85 383.0	EN 1706 AC-46100	1
64	Motor Housing	Stainless Steel	S 30400	1.4301	1
76	Capacitor				1
165	Rubber Cushion	Nitril Butadiene Rubber			3

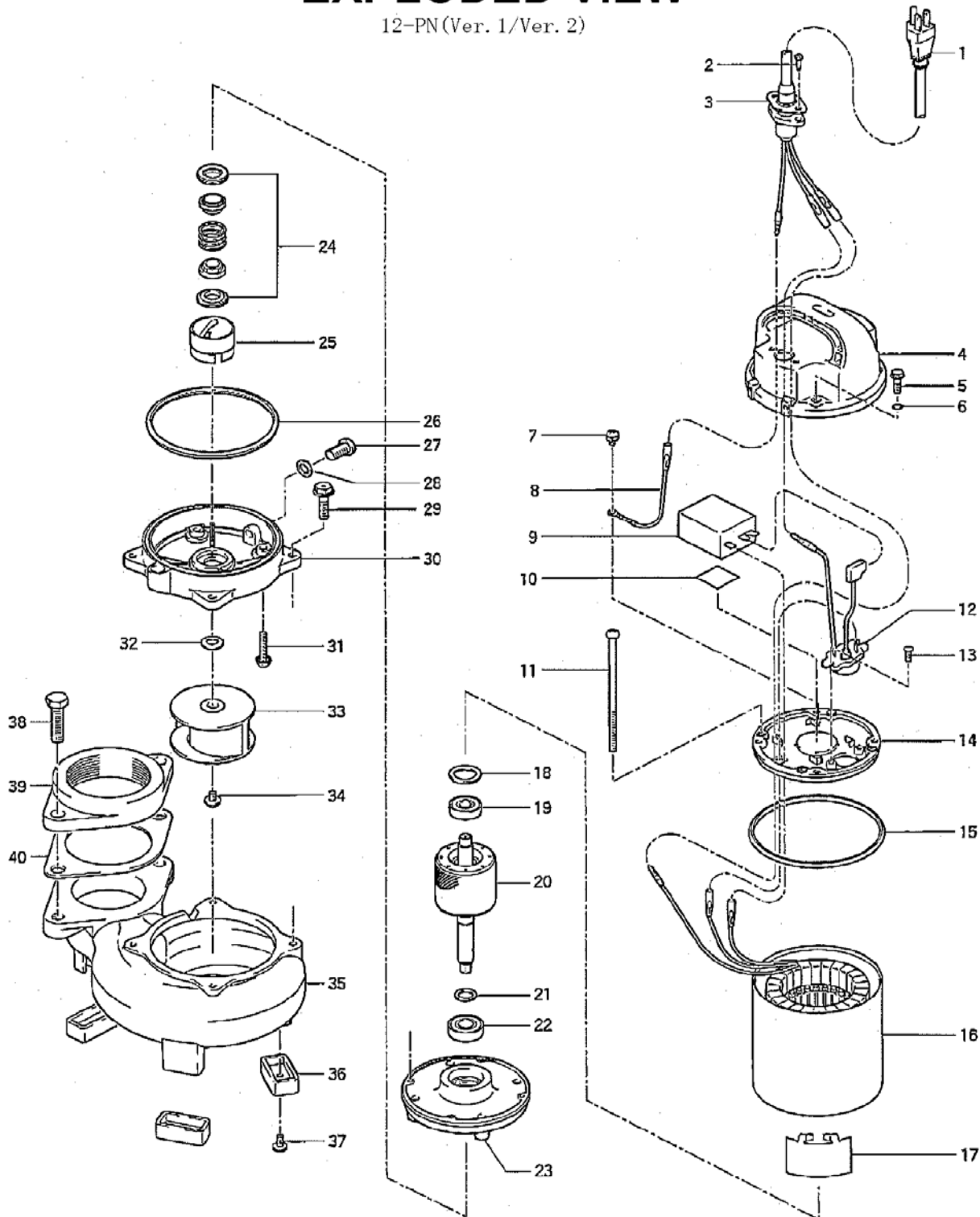
PARTS LIST		WATER FEATURE PUMP				5/24/2017
ITEM	PART No.	DESCRIPTION	QTY	SIZE	MATERIAL	NOTES
1	001-943-36	Cabtyre Cable Set (20') 120V-60Hz(USA)	1	STOW3x1.25mm2	LB	
	001-943-23	Cabtyre Cable Set (32') 120V-60Hz(USA)	1	STOW3x1.25mm2	LB	OPTIONAL
	001-471-25	Cabtyre Cable Set (50') 120V-60Hz(USA)	1	STOW3x2.0mm2	LB	OPTIONAL
2	143-000-33	Hex.Tapping Screw	2	M5x20	SUS304	
3	003-190-10	Gland	1		SUS316	
4	051-000-02	Head Cover	1		Resin	
5	140-000-07	Hex.Bolt (w/Plain Washer)	4	M6x30(22L)	SUS304	
6	122-004-18	O-Ring	4	P-6(5.8xd1.9)	NBR	*
7	143-085-34	Pan Screw (w/Spring Washer)	1	M4x6	C3604	
8	009-190-18	Earth Terminal	1Set	AWG16x150L		
9	076-000-01	Capacitor 120V-60Hz(USA)	1	45MF-220VAC		
10	200-000-01	Tape	1	30x30x0.8t		
11	143-000-05	Pan Screw	4	M5x138(20L)	SWRM	
12	053-000-08	Motor Protector 120V-60Hz(USA)	1	KA142-BDXL14F	(T+H)	
13	143-136-15	Truss Screw	2	M4x10	SWRM	
14	050-000-02	Motor Bracket	1		ADC	
15	121-471-17	Packing	1	d126.6xd135.6x6t	NBR	*
16	056-000-36	Stator (w/M. Frame)120V-60Hz(USA)	1Set			
17	071-000-01	Collar	1	37L	SECC	
18	142-192-16	Wave Washer	1	6201(D=32,t=0.4)	SK5	
19	052-100-15	Bearing	1	6201ZZC3		
20	055-000-22	Rotor	1Set	w/Bearing		
21	061-157-15	Bearing Collar	1	d15.1xd21x1.6t	SPCC	
22	052-152-12	Bearing	1	6302ZZC3		
23	060-000-04	Bearing Housing	1		ADC	
24	025-290-19	Mechanical Seal	1	W-14HL	SiC+CCBN	
25	030-000-01	Oil Lifter	1	VANCS2	Resin	
26	121-001-12	Packing	1	VANCS2	NBR	*
27	035-127-15	Oil Plug	1	M10x15	SUS304	
28	121-246-11	Packing	1	d10.3xd16x2t	PE	*
29	140-000-03	Hex.Bolt (w/Plain Washer)	4	M6x25	SUS304	
30	029-000-01	Oil Casing	1	VANCS2	Resin	
31	143-000-26	Truss Screw (w/O-Ring)	4	M6x20(P-5,NBR)	SUS304	*
32	142-354-18	Conical Spring Washer	1	d11.2xd22.5x0.8t	SUS304	
33	021-008-13	Impeller (60Hz)	1	12-PN	Resin	
34	143-140-12	Truss Screw (w/Plain Washer)	1	M6x12	SUS304	
35	020-002-30	Pump Casing	1	12-PLN-61	FC	
36	165-000-09	Rubber Feet	3	12-PLN-61	NBR	

PARTS LIST		WATER FEATURE PUMP				5/24/2017
ITEM	PART No.	DESCRIPTION	QTY	SIZE	MATERIAL	NOTES
37	143-173-14	Truss Screw (w/Plain Washer)	3	M5x10	SUS304	
38	140-099-16	Hex.Bolt	2	M12x40	SUS304	
39	048-137-18	Screwed Flange	1	NPT-3(P.C.140)	FC	
40	121-137-18	Packing	1	MBT(P.C.140)	NBR	*
	173-002-30	Packing O-Ring Set	1Set	(Marked by *)		
6	122-004-18	O-Ring (Head Cover Fixing Bolt)	4	P-6(5.8xd1.9)	NBR	*
15	121-471-17	Packing (Head Cover/M.Frame)	1	d126.6xd135.6x6t	NBR	*
26	121-001-12	Packing (M.Frame/O.Casing)	1	VANCS2	NBR	*
28	121-246-11	Packing (Oil Plug)	1	d10.3xd16x2t	PE	*
31	122-003-17	O-Ring (P.Casing Bolt)	4	P-5(4.8xd1.9)	NBR	*
40	121-137-18	Packing (Screwed Flange)	1	MBT(P.C.140)	NBR	*
		Lubricant		Liquid Paraffin VG32 240ml		

PARTS LIST		WATER FEATURE PUMP		5/24/2017		
ITEM	PART No.	DESCRIPTION	QTY	SIZE	MATERIAL	NOTES

EXPLODED VIEW

12-PN(Ver. 1/Ver. 2)



C-01167-1